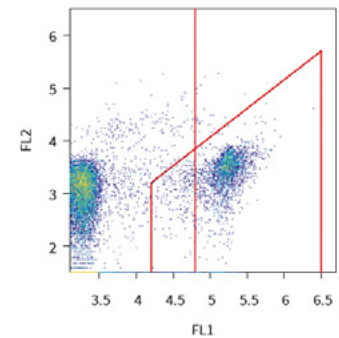




BactoSense® PURE is a cutting-edge flow cytometer, adapted for rapid and automated microbiological analysis of purified water. Designed for simplicity and accuracy, it provides results within 20 minutes. Get unmatched, real-time data for precise water quality control, enabling superior decision-making and operational efficiency. With BactoSense PURE, you are in control of your processes, assets and in compliance with the strictest standards.

### Measurement

Measuring principle	Flow cytometry
Detection range	0–5,000,000 cells/mL
Quantification range	Intact Cells: 100–2,000,000 cells/mL
Laser type and wavelength	Laser diode 488 nm
Fluorescence	530/50 nm FL1, 715 LP nm FL2
Forward scatter	488 nm FSC
Side scatter	488 nm FSC
Result parameters	ICC/mL, LNAC/mL, HNAC/mL, HNAP (%) Advanced configurable gating set
Automatic measuring interval	From every 30 minutes to every 6 hours



Dotplots showing ICC

### Sampling

Sampling type	Online or manual
Online sampling device	Flow through device: 200–400 mL/min (0.05–0.10 gal/min) Pressure in device: max. 0.5 bar (7.3 psi) Measured volume: 90 µL
Manual sampling device	Sample container: 5-mL screw-cap tube Sample volume: 2–5 mL Measured volume: 90 µL
Sample conditions	Temperature: 5–40 °C (41–104 °F) Turbidity: 0–10 FTU, 0–10 FNU Conductivity: 0–100,000 µS/cm at 20 °C (68 °F) pH-value: 5–12 Chlorine: max. 3 mg/L Iron: max. 200 µg/L Manganese: max. 50 µg/L



Online sampling device



Manual sampling device

### General

Operating environment	Indoor use
Operating altitude	Max. 2000 m (6,600 feet) above sea level
Operating temperature	5–30 °C (41–86 °F)
Operating humidity	10–90 % RH
Storage temperature	5–30 °C (41–86 °F)
Storage humidity	10–70 % RH
Protection classes	BactoSense: IP65, Power supply: IP67

## Physical

Dimension (W x D x H)	361 x 270 x 424 mm (14.2 x 10.6 x 16.7")
Weight	14.3 kg with cartridge (31.5 lbs), 11.1 kg without cartridge (24.5 lbs)
Power supply dimension (W x D x H)	230 x 80 x 65 mm (9.0 x 3.1 x 2.6")
Power supply weight	0.9 kg (2.0 lbs)

## Electrical

Power supply	Power supply unit: 100–240 VAC $\pm$ 10 %, 50/60 Hz, 1.4 A BactoSense: 18–24 VDC, 60 W
Power consumption	Average consumption: 20 W, peak consumption: 60 W
Recovery after power interruption	Configurable auto-restart

## Interfaces, connectivity and remote access

USB	2 x USB 3.1, 5 V 1 A per port
Ethernet	1 x RJ45 Gigabit Ethernet
Ethernet protocols	Web interface, Remote desktop (VNC), Modbus TCP, HTTP / HTTPS, FTP
Digital inputs	4 x digital inputs
Analogue and digital outputs	2 x analogue outputs, 4 x digital outputs
Display	WVGA, 7.0" capacitive touchscreen
Mobile connectivity	BactoLink connectivity module (optional)
Advanced data analysis	FCS 3.1 file export
Data storage capacity	128 GB

## 21 CFR Part 11 and Validation

Audit trail	Full operation log
Role-based access control (RBAC)	Management of individual users and roles Authenticated electronic signature
Primary validation	per Ph. Eur and USP
Instrument qualification	IQ/OQ/PQ (optional)

## Cartridge

Capacity	Up to 1,000 measurements
Validity	9 months
Storage temperature	15–25 °C (59–77 °F), ideally at 15 °C (59 °F)
Storage humidity	20–60 % RH

## Maintenance

Preventive maintenance	After 3 cartridges, at least yearly
Calibration	Factory calibration only

## Compliance

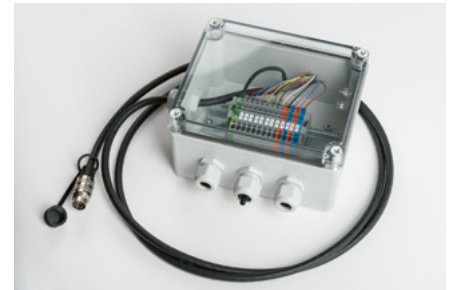
The product has been tested and fulfills the requirements of all applicable standards of the CENELEC countries, US, Canada and Japan.

## Accessories and Consumables

Cartridge refills, BactoLink mobile connectivity module, IO-Box, Cleaning kit, Validation kit, Transport case



BactoLink mobile connectivity module



IO-Box



Cartridge



Cleaning kit

